

FOR SALE

7 Single-Family Detached Lots

Morgan Commons Subdivision
Gravel Springs Road
Buford (Gwinnett County), Georgia

For more information,
please contact:

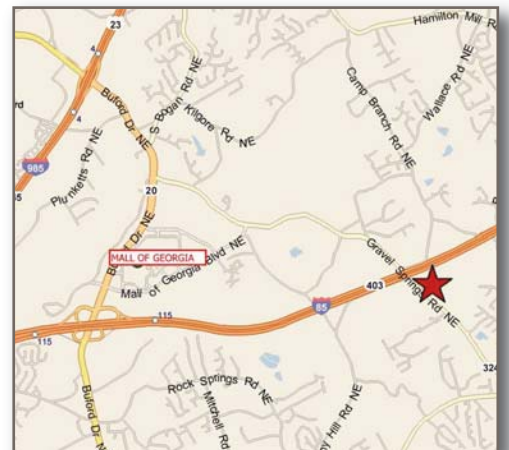
Nelson Vinson
404.925.0995
nrv@mcwrealty.com

**McWhirter Realty
Partners**
4045 Orchard Road
Building 400
Smyrna, GA 30080

www.mcwrealty.com



- 7 Single-Family Detached Lots
- New Single-Family Homes Priced From the Low \$200s
- Zoned R-ZT, Gwinnett County, GA.
- 4,000 SF Minimum (40' x 105' average) Lot Size
- Plat is Recorded
- Convenient to Mall of Georgia
- Schools: Fort Daniel Elementary, Frank N. Osborne Middle, Mill Creek High
- Priced at \$154,000 (\$22,000 per lot)



No warranty or representation, expressed or implied, is made as to the accuracy of the information contained herein, and same is subject to errors, omissions, change of price, rental or other conditions, withdrawal without notice, and to any special listing conditions, imposed by our principals.



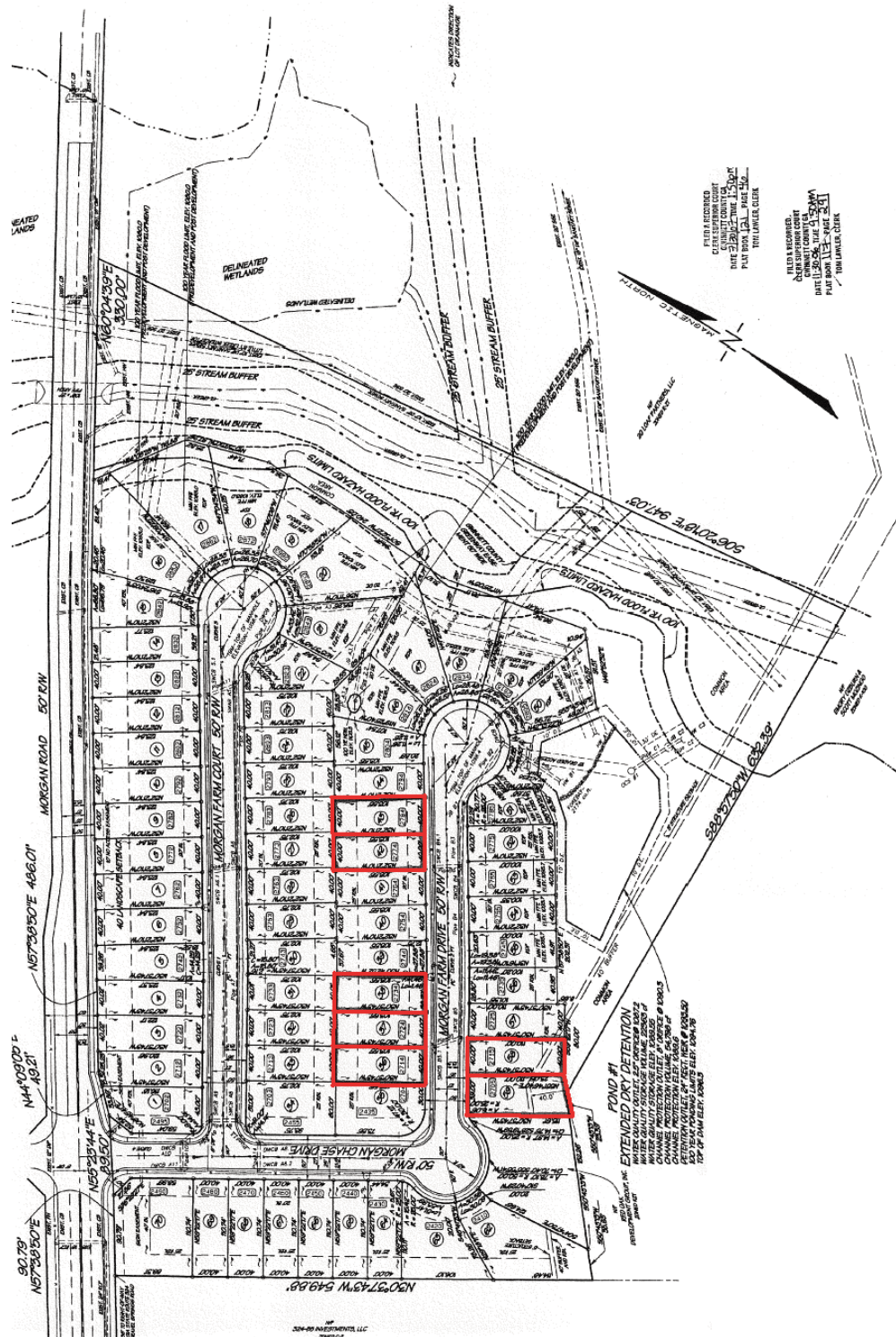
Morgan Commons Subdivision
 Gravel Springs Road
 Buford (Gwinnett County), Georgia

For more information,
 please contact:

Nelson Vinson
 404.925.0995
 nrv@mcwrealty.com

McWhirter Realty
 Partners
 4045 Orchard Road
 Building 400
 Smyrna, GA 30080

www.mcwrealty.com



No warranty or representation, expressed or implied, is made as to the accuracy of the information contained herein, and same is subject to errors, omissions, change of price, rental or other conditions, withdrawal without notice, and to any special listing conditions, imposed by our principals.